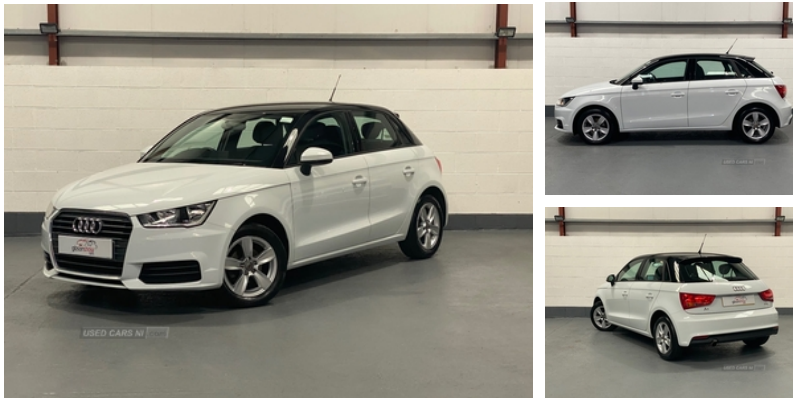


Audi A1 1.0 TFSI SE 5dr | Oct 2015

*** SORRY NOW SOLD ***

£12,995



Vehicle Features

12V socket in centre console, 15" 5 arm design alloy wheels, ABS/EBD, Adaptive brake lights, Adjustable rear head restraints, Body coloured bumpers, Body coloured door mirrors, Brake assist function, Cupholders in centre console, DAB Digital radio, Driver/Front Passenger airbags, Driver and passenger side airbags, Dynamic suspension, EDL, Electric adjustable door mirrors, Electric front windows, Electric rear windows, Electro-mechanical PAS, ESP with ASR, First aid kit, Front and rear seatbelt reminder, Front floor mats, Front head restraints, Front passenger airbag deactivation, Head airbags, Heated door mirrors, Heated rear windscreen, Heat insulating glass, Height adjustable front seatbelts, Height adjustable front seats, Illuminated glovebox, Isofix attachments on rear seats, Jack and tool kit, Locking wheel bolts, Rake/reach adjustable steering wheel, Rear wiper, Remote control central locking, Service interval indicator, Split folding rear seats, Thatcham category 1 alarm + immobiliser, Tyre pressure monitor, Tyre repair kit, Warning triangle

Miles:	15400
Fuel Type:	Petrol
Transmission:	Manual
Colour:	White
Engine Size:	999
CO2 Emission:	97
Tax Band:	A (£20 p/a)
Body Style:	Hatchback
Insurance group:	15E
Reg:	VGZ4408

Technical Specs

DIMENSIONS

Length:	3973mm
Width:	1746mm
Height:	1422mm
Seats:	5
Luggage Capacity (Seats Up):	270L
Gross Weight:	1580KG
Max. Loading Weight:	520KG

PERFORMANCE & ECONOMY

Fuel Consum. (Urban Cold):	56.5MPG
Fuel Consum. (Extra Urban):	76.3MPG
Fuel Consum. (Combined):	67.3MPG
Fuel Tank Capacity:	45L
Number Of Gears:	5 SPEED
Top Speed:	116MPH
Acceleration 0-100 km/h:	11.1s
Engine Power BHP:	93.9BHP